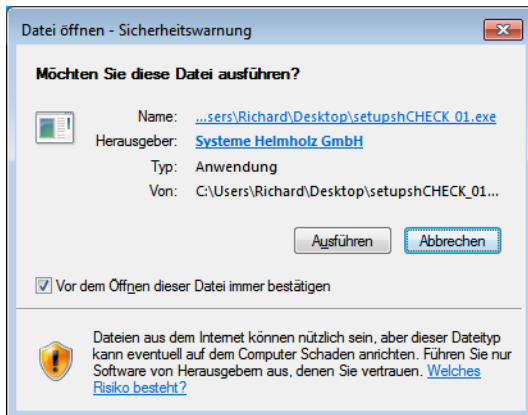
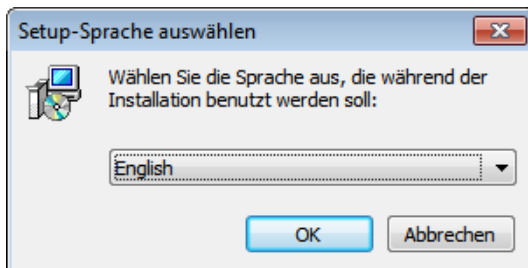


With shCheck you can check if you can establish an account to the PERO Maintenance portal via internet.

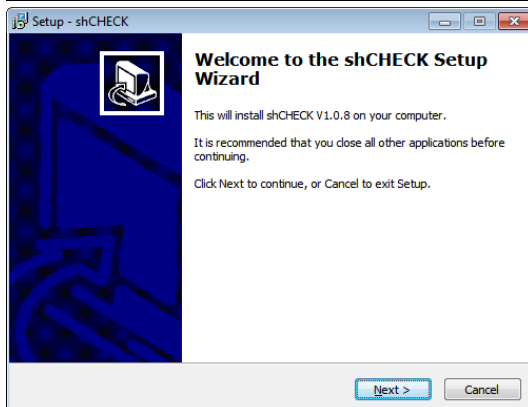
Download the software from the PERO homepage (<http://www.pero.ag/downloads/>) to your PC and start it with double click.



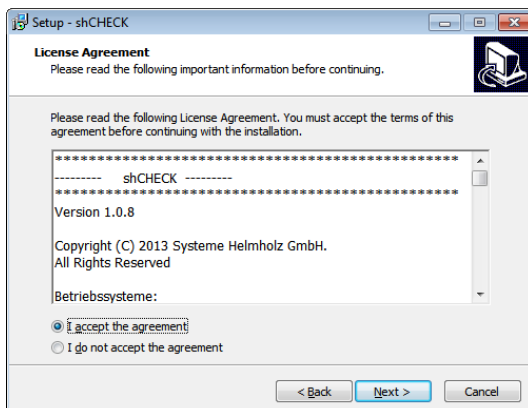
Select **Ausführen**



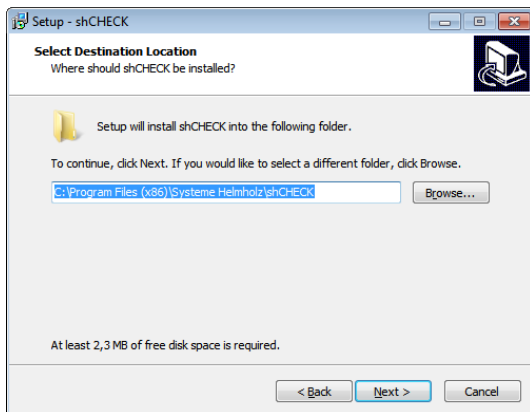
Choose your language



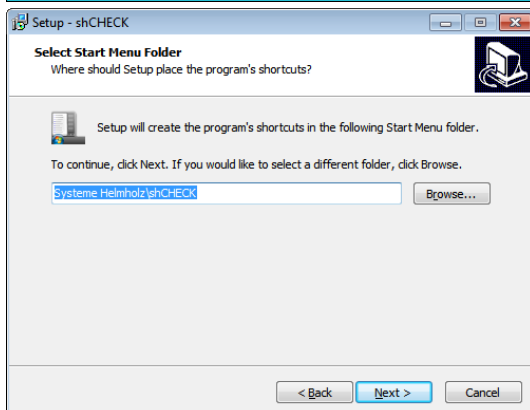
Select **Next**



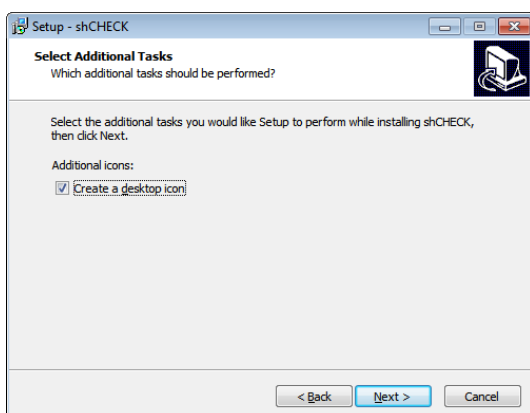
Select **I accept the agreement** and select next



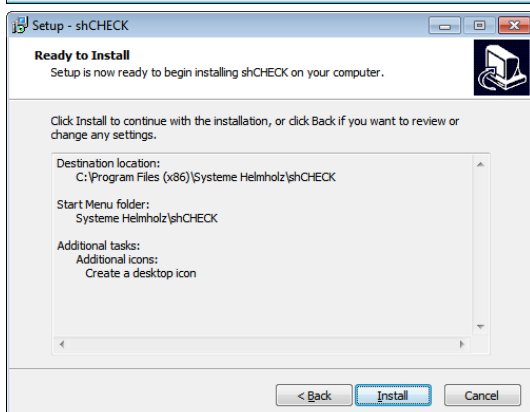
Select **Next**



Select **Next**



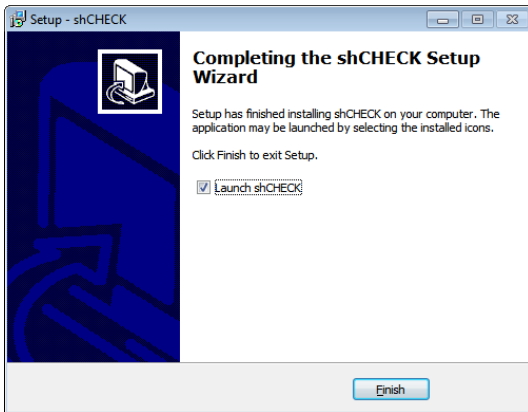
Select **Create a desktop icon** and select **Next**



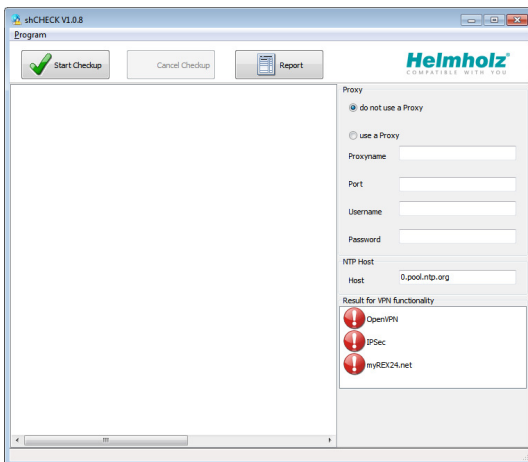
Select **Install**

After some seconds the software is installed.

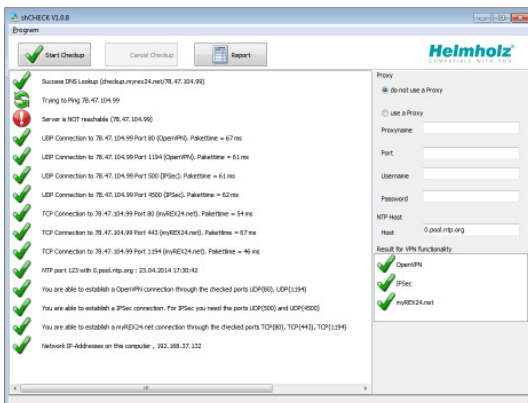
# How to use shCheck



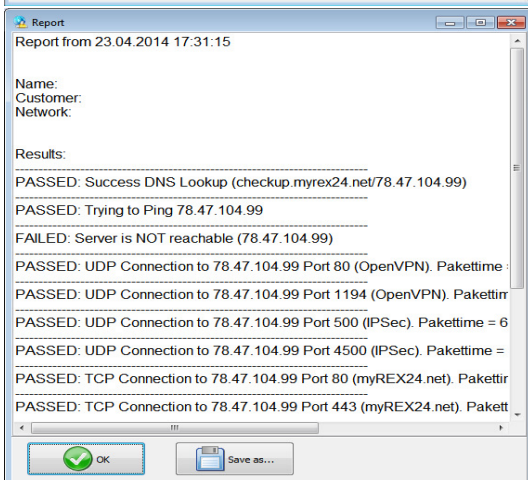
Select **Launch shCheck** and select **Finish**  
The Program shCheck is starting



Select **Start Checkup**  
Now the program will check if you can establish an account to the PERO Maintenance portal



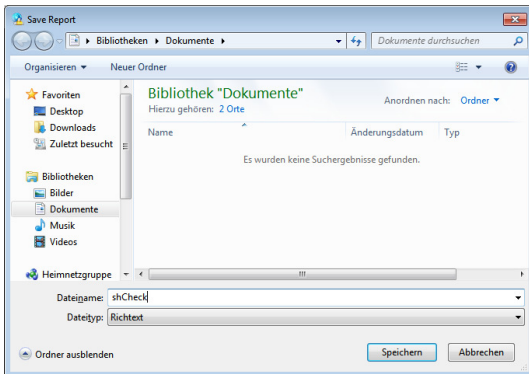
After some seconds the display shows you the result.  
Select **Report**



Select **Save as ...**



# How to use shCheck



Enter a filename and choose the directory where you will save this report  
Finish the program

Report from 23.04.2014 17:31:15

Name:  
Customer:  
Network:

Results:

-----  
PASSED: Success DNS Lookup (checkup.myrex24.net/78.47.104.99)

-----  
PASSED: Trying to Ping 78.47.104.99

-----  
FAILED: Server is NOT reachable (78.47.104.99)

-----  
PASSED: UDP Connection to 78.47.104.99 Port 80 (OpenVPN). Pakettime = 67 ms

-----  
PASSED: UDP Connection to 78.47.104.99 Port 1194 (OpenVPN). Pakettime = 61 ms

-----  
PASSED: UDP Connection to 78.47.104.99 Port 500 (IPSec). Pakettime = 61 ms

-----  
PASSED: UDP Connection to 78.47.104.99 Port 4500 (IPSec). Pakettime = 62 ms

-----  
PASSED: TCP Connection to 78.47.104.99 Port 80 (myREX24.net). Pakettime = 54 ms

-----  
PASSED: TCP Connection to 78.47.104.99 Port 443 (myREX24.net). Pakettime = 67 ms

-----  
PASSED: TCP Connection to 78.47.104.99 Port 1194 (myREX24.net). Pakettime = 46 ms

-----  
PASSED: NTP port 123 with 0.pool.ntp.org : 23.04.2014 17:30:42

-----  
PASSED: You are able to establish a OpenVPN connection through the checked ports UDP(80), UDP(1194)

-----  
PASSED: You are able to establish a IPSec connection. For IPSec you need the ports UDP(500) and UDP(4500)

-----  
PASSED: You are able to establish a myREX24.net connection through the checked ports TCP(80), TCP(443), TCP(1194)

-----  
PASSED: Network IP-Addresses on this computer , 192.168.37.132  
-----

The report will look similar like this

Please send this report via eMail to Pero

Thank you for your help